

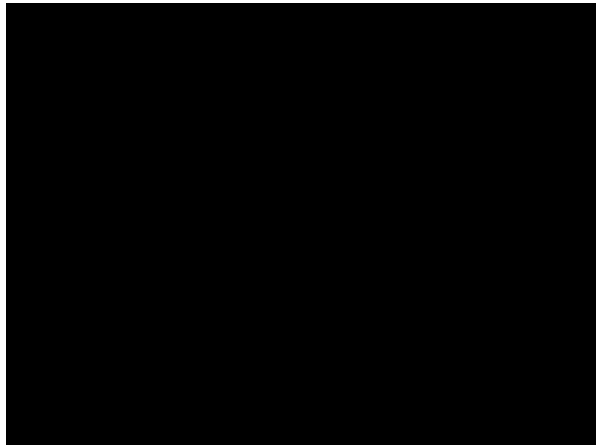
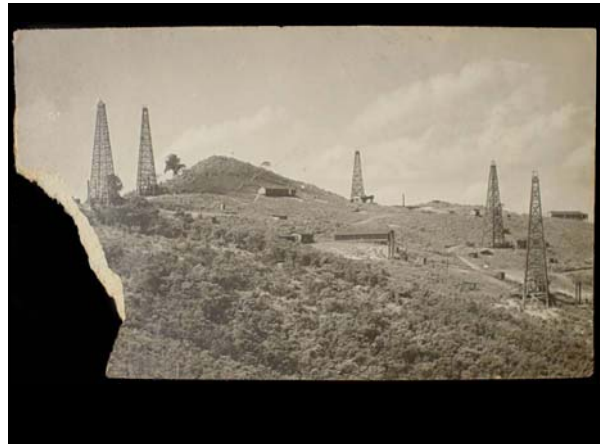
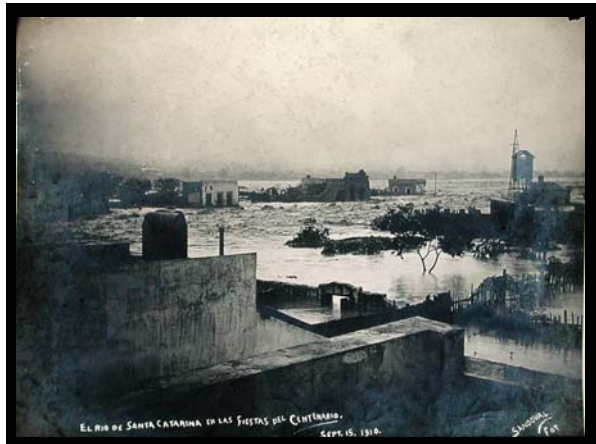
Principios para la preservación de tarjetas postales fotográficas

■ Roberto Ortiz Giacomán

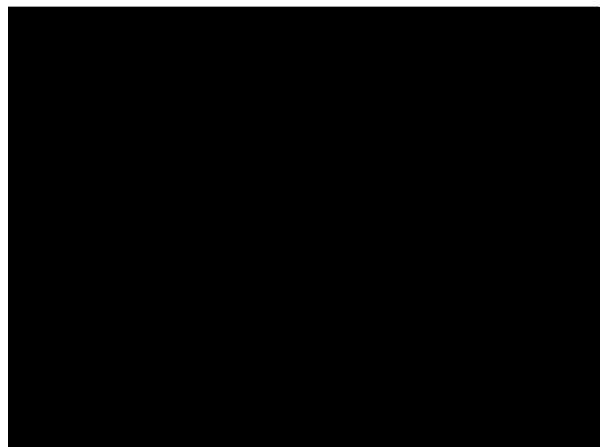
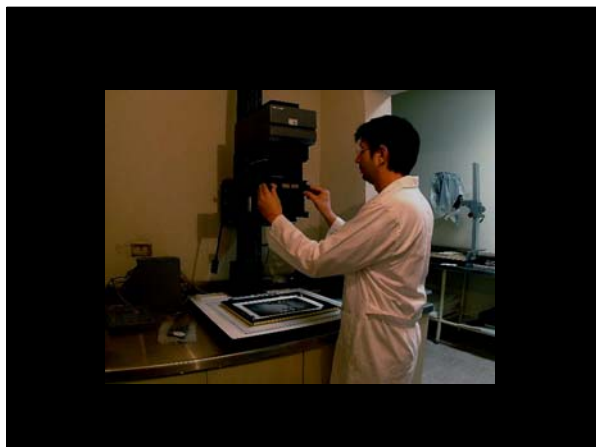


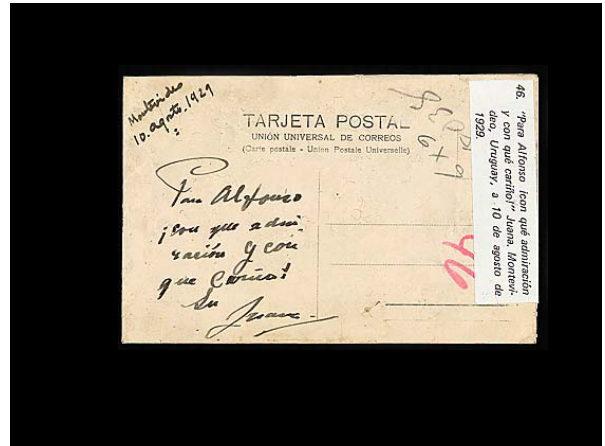
El campo del conservador



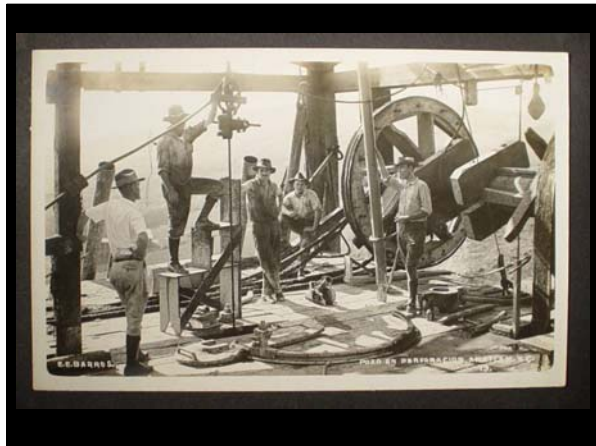


PAPER	Dates	Notes
AGFA/ANSCO	1930-1940s	
ANSCO	1940-1960	2 Stars at top & bottom
ARGO	1905-1920	
ARTURA	1910-1924	
AZO	1925-1940s	Squares in corners
AZO	1904-1918	4 triangles pointed up
AZO	1918-1920	Triangles 2 up, 2 down
AZO	1907-1909	DIAMONDS in corners
AZO	1922-1926	Empty Corners
CYKO	1904-1920s	
DEFENDER	1910-1920	Diamond above & below
DEFENDER	1920-1945	Diamond inside
Deville Peerless	1950-	
DCPS	1925-1942	
Du Pont	1945-1920s	
EIK	1928-1960	
EKXP	1924-1960	
EKO	1942-1970	
KODAK	1950-NOW	
KRUXO	1907-1920s	
KRUXO	1910-1920s	Xs in corners
MULTISCOPE & FILM CO-WISC.	Pre-1909	BADGER
NOKO	1907-1920s	
PMO	1907-1915	
SALBOAT	1905-1926	Salboat in circle
SOLO	1920-1920s	Diamonds in corners
VELOX	1907-1914	Diamonds in corners
VELOX	1907-1914	Squares in corners
VELOX	1909-1914	Triangles: 4 pointed Up
VITAVA	1925-1934	





307 - Plaza de Toros, Monterrey, N. L. Mex.



Parras Mex Fuel Co. Tampam. Ver. 3. E. Barret. Fot.

